

MONTHLY MEMBERSHIP PROGRESS REPORT

District 19 N

Results as of: 3/31/2026

GMT:

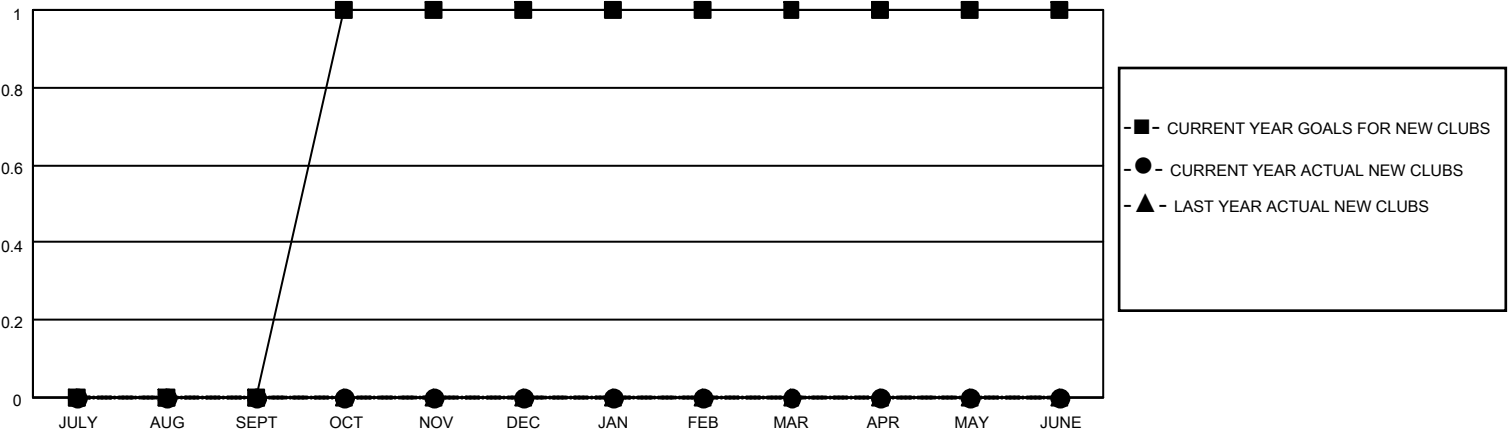
LOCATION WASHINGTON

GMT CA

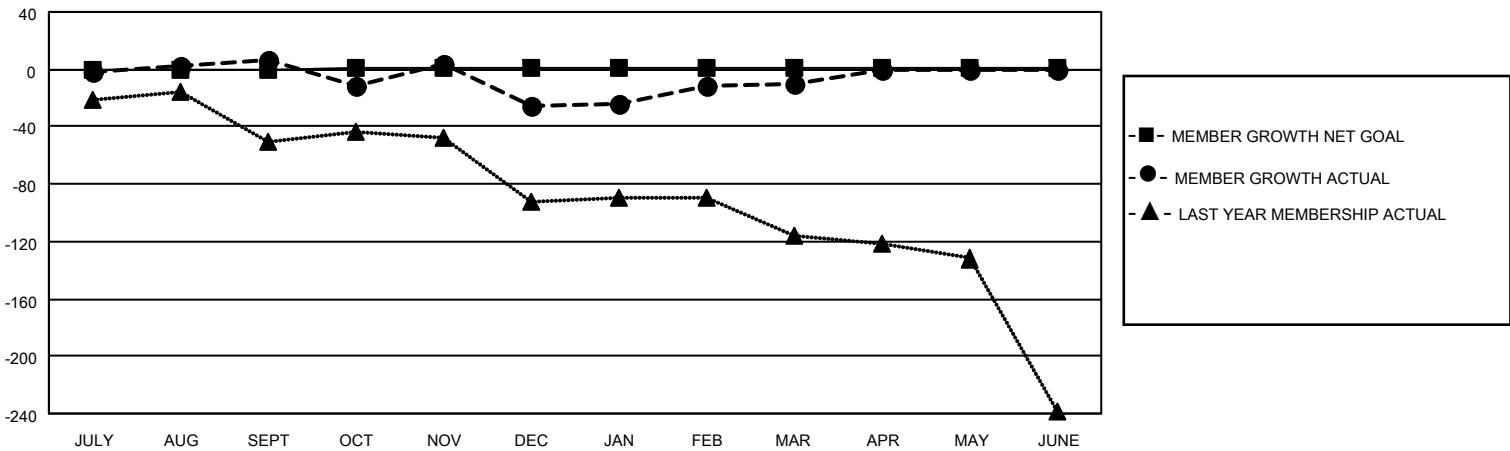
Clubs			
RESULTS FOR 2025-2026			
QUARTER	NEW CLUB GOAL	NEW CLUBS	DROPPED CLUBS
JULY/AUG/SEPT	0	0	0
OCT/NOV/DEC	1	0	0
JAN/FEB/MAR	0	0	0
APR/MAY/JUNE	0	0	0

Members			
RESULTS FOR 2025-2026			
QUARTER	MEMBER GROWTH NET GOAL	MEMBER GROWTH ACTUAL	DROPPED MEMBERS ACTUAL (including transfers)
JULY/AUG/SEPT	0	81	57
OCT/NOV/DEC	1	85	110
JAN/FEB/MAR	0	70	40
APR/MAY/JUNE	0	0	0

GOALS AND ACTUAL NEW CLUBS CUMULATIVE



GOALS AND ACTUAL MEMBERS CUMULATIVE



DROPPED CLUBS: 0	42 CLUBS OF 74 ADDED 1 OR MORE NEW MEMBERS	GENDER DISTRIBUTION MALE 1,125 (54.72%) FEMALE 930 (45.23%)
DROPPED MEMBERS DECEASED 23 CLUB CANCELLED 0 OTHER 184 <hr/> TOTAL 207	CLICK HERE FOR CUMULATIVE MEMBERSHIP DATA	TOTAL FAMILY UNIT MEMBERS 659 FAMILY MEMBERS PAYING HALF DUES 339